

THE
SPACE



2190 E SEMORAN BLVD | APOPKA, FL

FOR LEASE - 5,655 SF | \$17.00 PSF

Versatile Warehouse in Apopka at Semoran Crossings



DETAILS

Lease Rate:	\$17.00 PSF NNN
Building Size:	±5,655 SF
Land Size:	±1.86 AC
Available:	CALL FOR DETAILS
Zoning:	APK-C-C
Type:	Industrial
Parking:	Ample. 6 spaces at the building + shared back lot
Signage:	Building

HIGHLIGHTS

- 12' x 14' Dock-High Door | 12' x 12' Drive-In Door

WAREHOUSE SPACE IN APOPKA

Located along the bustling corridor of E. Semoran Blvd in Apopka, this 5,655± SF warehouse offers excellent functionality and accessibility for a variety of industrial or distribution uses. The space features both a drive-in door and a dock-high door, providing versatile loading options, along with a good clear height that accommodates racking, storage, or logistics needs. The open floor plan allows for efficient workflow and layout flexibility, while 200 amps of power supports a range of operational requirements. With its strategic location, quality features, and easy access to major thoroughfares, this property is well-positioned to serve as a productive base for your business.



Trey Dyer
Trey@4acre.com
407.797.7767

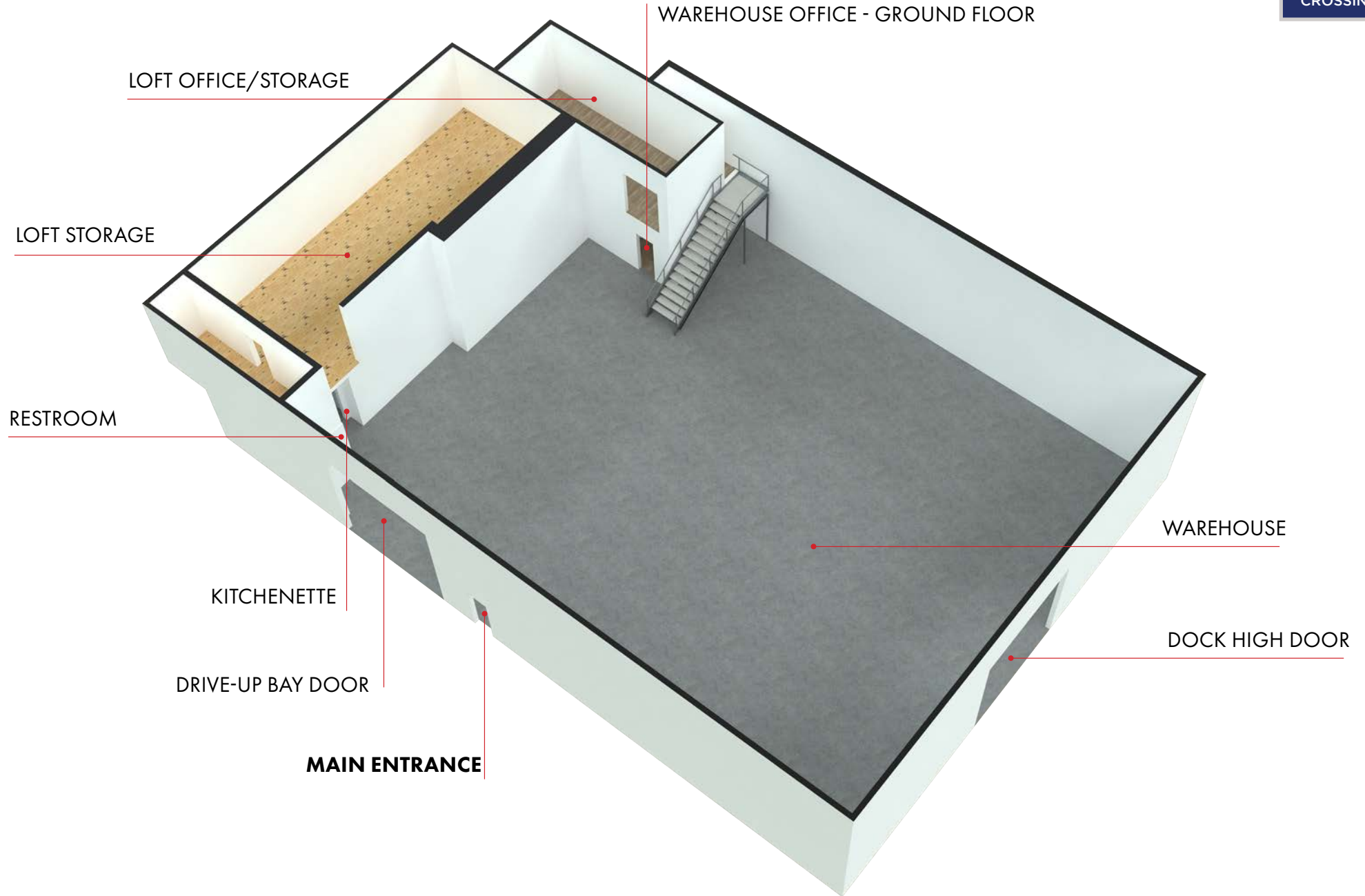


Nicholas Fouraker CCIM
nick@4acre.com
407.601.1466

AERIAL

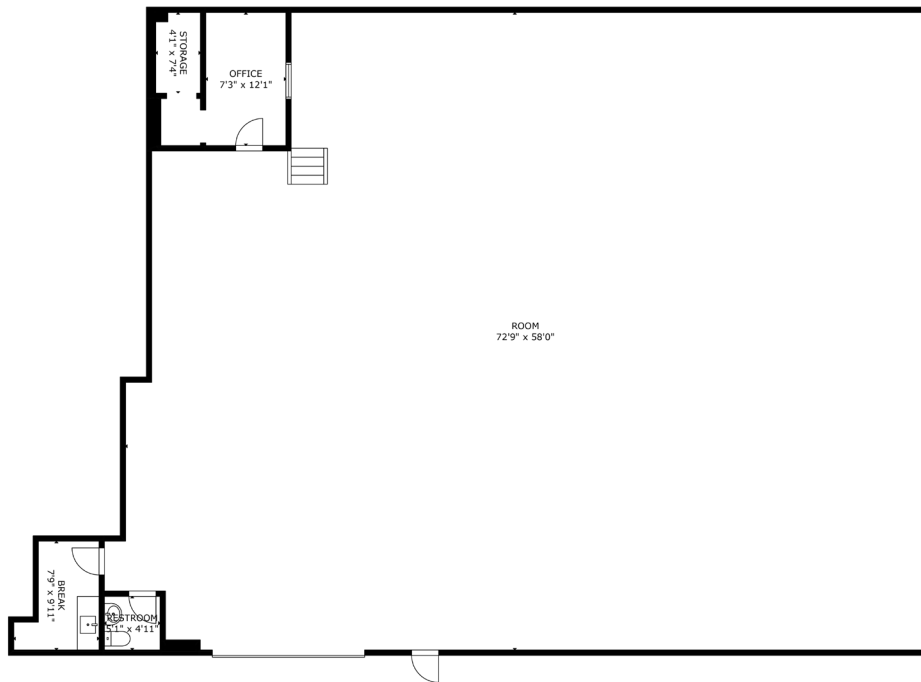


SPACE LAYOUT

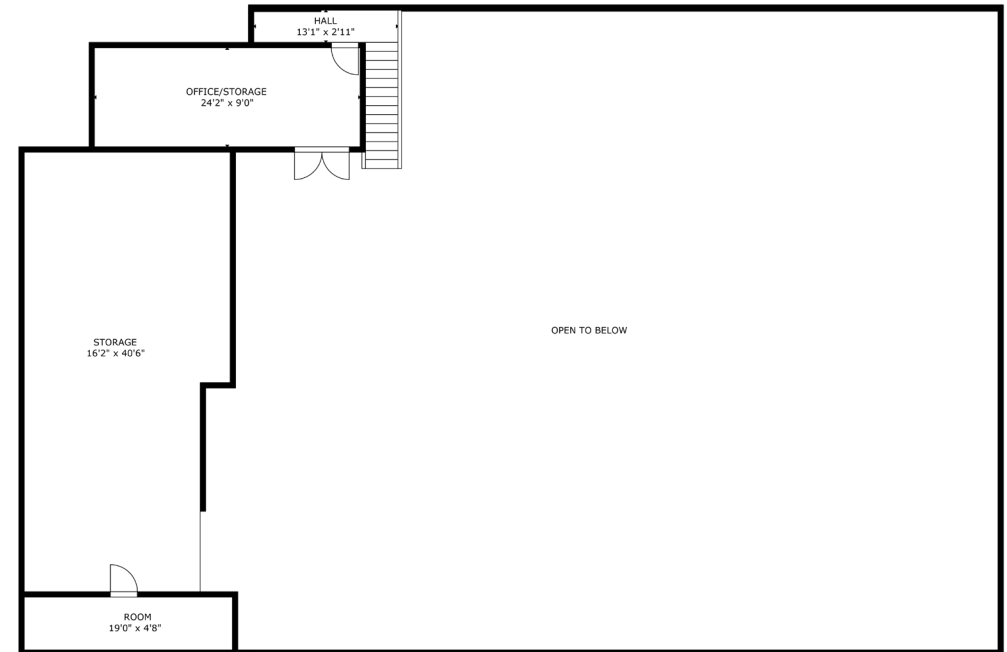


FLOOR PLAN

GROUND FLOOR

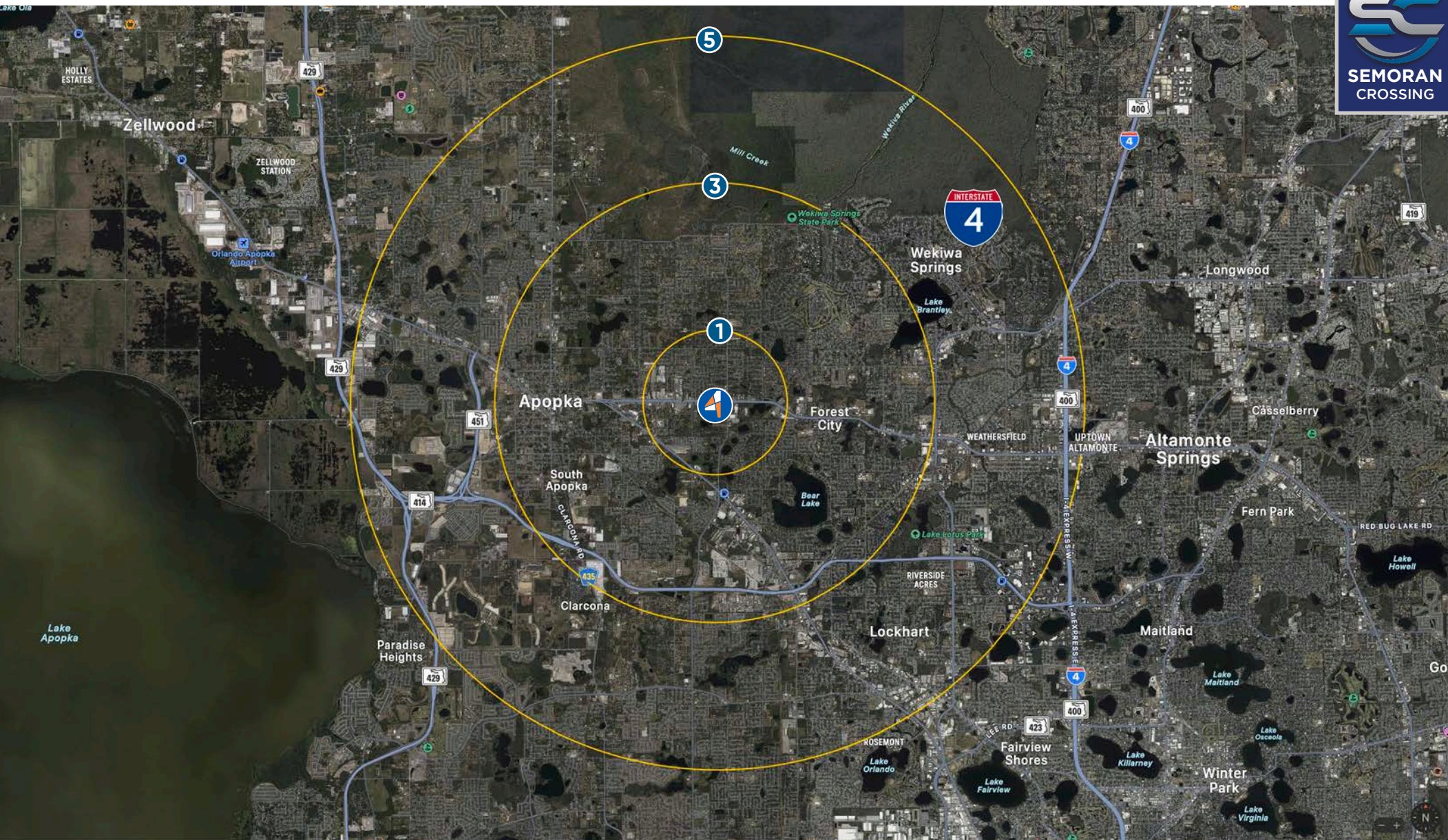


LOFT SPACES



INTERIORS





LOCATION & DEMOGRAPHICS

Radius	Population	HH Income	Businesses	Employees
1-Mile	11,621	\$68,782	503	4,086
3-Mile	70,802	\$93,290	2,994	23,386
5-Mile	188,948	\$88,064	8,181	63,336



Trey Dyer
Trey@4acre.com
407.797.7767

Nicholas Fouraker CCIM
Nick@4acre.com
407.601.1466

4 Acre Commercial Real Estate (4 Acre) does not represent or warranty the accuracy of the information contained herein. Such information has been given to 4 Acre by the owner of the property or obtained from other sources deemed reliable. 4 Acre has no reason to doubt its accuracy, but does not guarantee it. The reviewer(s) of this document is encouraged to perform their own research for their own purposes to verify the dependability of the information being reviewed. All information should be verified by reviewer(s) prior to purchase or lease. Unless otherwise noted, the property is being offered as-is, where is, with all faults. This information represents the proprietary work product of 4 Acre Realty, LLC and may not be copied, reproduced, modified, distributed, published, transmitted, or otherwise disclosed without the express written consent of 4 Acre Realty, LLC.